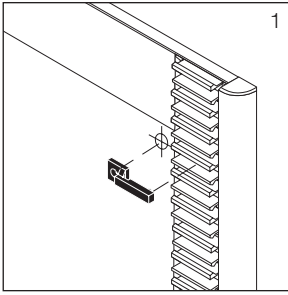


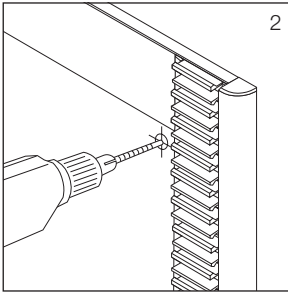
Accord¹⁵

Surface Mounted to Wall/Door

Installation & Maintenance**Mechanical Fasteners (MF)**

If your Accord 15 module exceeds one square foot, it is essential that Mechanical Fasteners are used in addition to the double-sided tape which is used only to temporarily hold the sign in position.

► *Note: Mechanical Fasteners are not included with your order, owing to varying wall conditions. A wide range of fasteners are suitable, but selecting the appropriate fastener is the responsibility of the installer. See **Mounting Surface Conditions**, page 1.*

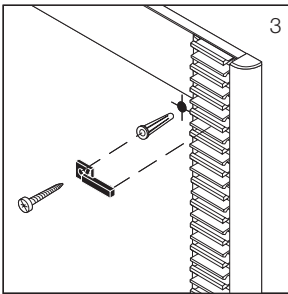


The Accord Side Track Mounting Clip (STMC) should be used to mechanically fasten the Side Track to the mounting surface. The Mounting Clip is designed to receive a #8 or #10 head screw and eliminates the need for drilling into the aluminum Side Track profile.

► *Caution: Do not drill mounting hole through Side track, as possible damage to Multi Clips may occur.*

Follow VT steps 1-3, then the following:

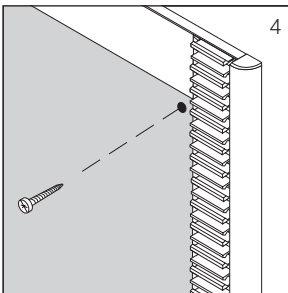
1. Place Mounting Clips and mark corresponding holes with pencil or awl. A minimum of four (4) Clips should be used and larger signs should receive additional Clips as necessary.
2. Remove Mounting Clips and either drill a pilot hole for screws or hole for insertion of hollow wall fasteners. See examples. If possible, it is preferable to align Clips so that the fastener enters a metal or wooden stud within a hollow wall.
3. Replace Mounting Clips and secure with screws.

**Factory Assembly with Metal Backer**

When necessary, for large assemblies and those with multiple columns, Accord Side Track products may be preassembled at the factory to a thin, aluminum sheet backer.

4. This assembly accommodates several different attachment methods. You may drill directly through the backer and attach with appropriate anchors, or, preferably, into a wall stud or solid material. Note: Drill holes 3/8" - 1/2" from Side Track.

Alternately, you may use the plastic Side Track Mounting Clips (STMC), described above. When the STMC is used, it is necessary to drill through the aluminum backer and into the mounting surface.

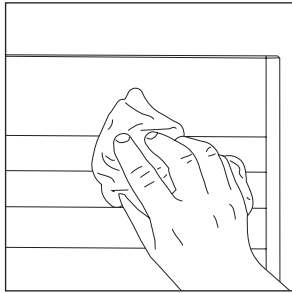


Accord¹⁵

Maintaining Accord 15 Products

Installation & Maintenance

Accord products are designed to provide years of trouble-free service. As with any product, however, proper care will keep your signs looking and functioning well.



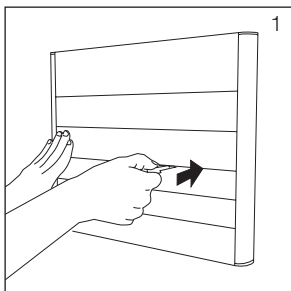
Appearance

Proper care for your sign finish is important, as harsh cleansers and solvents can permanently damage the Accord aluminum finishes as well as the molded plastic components.

Always clean by wiping with a soft, lint-free, damp cloth, taking care to wipe gently and not rub.

For stubborn dirt, wash with a very mild solution of liquid hand detergent and lukewarm water. Use a soft cloth or sponge. Dry by blotting with a damp cloth or chamois. Do not dry by rubbing with a dry cloth.

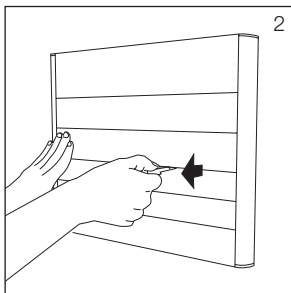
Avoid using products such as window cleaners, liquids containing ammonia, scouring compounds, gritty cloths, gasolines, or solvents (alcohol, acetone, kerosene, carbon tetrachloride, naphtha, spirits or any aromatic hydrocarbons).



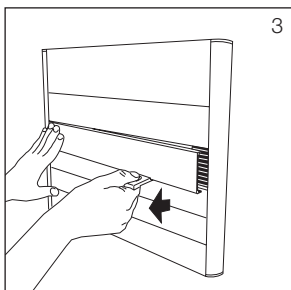
Removing SignBands from Assemblies with Multiple Bands

1. Using APCO white removal tool, push tool blade directly between two SignBands, making sure you select a location between the attachment clips (1-1/2" from outer edges of bands). Do not begin by using Removal Tool on outer edge of top and bottom SignBands!
2. Apply light pressure to one end of the SignBand requiring removal, while pulling straight out to release the opposite end. Do not pry band or bend Removal Tool in any way!
3. With one end disengaged, pull outward to release the other end.

► *Important! Push tool straight in and pull straight out!*



Need help? Telephone or visit our web site for video instructions: www.apcocomponents.com



VERY IMPORTANT!